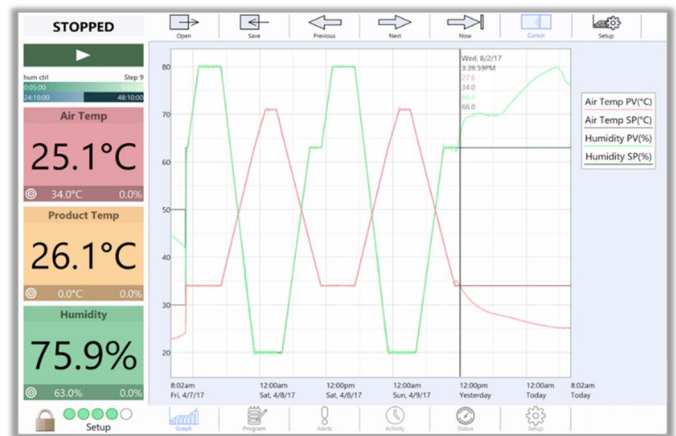




russellsOne

COLOR TOUCH SCREEN CONTROLLER

The russellsOne color touch screen controller is the most powerful state of the art chamber controller/microprocessor ever developed. Simple user interface with powerful data collection gives this controller faster screen access, faster programming and unprecedented flexibility. Under the hood is a world of data being collected for easy USB export. Combining off the shelf hardware and modern engineering makes this controller one of a kind. From benchtops to drive-in chambers, the russellsOne is the only controller you need and is packed with features such as:



- 12.3+PixelTouch touch screen display
- High performance Intel Core i5processor, 2.4 GHz, solid state drive
- 4 channels of PID control w/product temperature control
- 1GB Ethernet via Wi-Fi 802.11ac, Bluetooth wireless and RJ-45
- User definable graphical trending & process data real time
- Data logging of up to 64 inputs (optional) with virtual unlimited file storage
- Data exported as .csv or .png image
- Up to 32 configurable digital inputs & outputs
- Settings for chamber systems monitor and preventative maintenance
- Server enabled remote control from Lab View or other custom programs
- Multiple VESA compliant mounting options
- Easily retrofitted to most existing chambers
- Password protection for multiple users



technical products

SPECIFICATIONS

CHANNELS:

4 Process Variables

PRODUCT TEMPERATURE CONTROL:

Yes

OPERATING SYSTEM:

Windows 10 Pro

PROCESSOR:

Intel Dual Core i5 Processor

DISPLAY:

12.3+, 2736 x 1824, 267 ppi
High Density Display

STORAGE:

128GB SSD

COMMUNICATIONS:

1 GB Ethernet Via RJ-45
WiFi 802.11ac

USB:

(1) 3.0 For Data Transfer

POWER REQUIREMENTS:

In:100-240 VDC/50-60 HZ
Out: 12V DC/2.5a

OPERATING TEMPERATURE:

5°C(41°F) to 40°C(104°F)
8% to 85% RH @40°C Non-Condensing

COMPLIANCE:

CE

ACTIVITY LOG:

Logs Basic Events

OPERATING MODES:

Stop, Manual, Profile, Guaranteed Soak,
Ramp, Loop, Wait.

PROGRAM CAPACITY:

999 Loops
Program On The Fly

DATA LOGGING:

Logs up to 8 channels (up to 64 optional)
User Definable for Trending Graph and Exporting
(1 second intervals)

GRAPHICAL TRENDING:

Program and Process Data
Real Time

ANALOG INPUTS:

64 Including Inputs Used By System
+/-10V
+/-20mA
4-20mA
T,J, or K type Thermocouples
Optional: RTD (PT100)

ANALOG OUTPUTS: (Optional)

+/-10V
0-20mA

DIGITAL INPUTS: (32 depending on config.)

24VDC

DIGITAL OUTPUTS: (32 depending on config.)

Contact: 2A Max. Resistive, 80VA Inductive

PROFILE DELAY START:

1-999 hours

ALARMS:

32 User Definable w/History